

Congratulations!

You are now the proud owner of Zelco's LumiLock, the ultimate luggage lock. It is the world's only luggage lock with illuminated combination dials and cable hasp.

Made with state-of-the-art, high-strength, aircraft cable and high-impact plastic, LumiLock includes lifetime LED light (which can also be used as emergency flashlight), 5-year lithium battery, built-in name tag, and bright-colored case for easy luggage identification.

Like all Zelco products, Lock-Up is made of the finest, most advanced materials available, and to the highest standards of craftsmanship, and should provide you with years of use. Please read instructions before using it.

Instructions

Setting the combination:

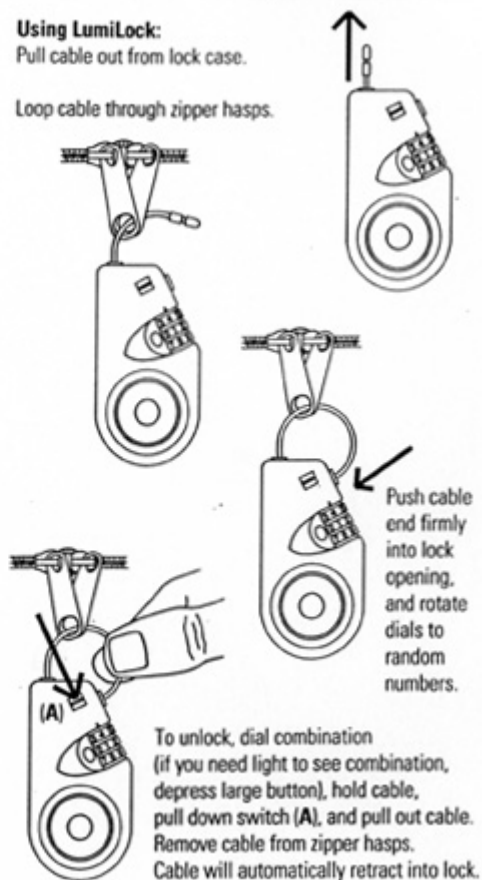
Combination is presently set at 000 and can only be changed while cable is in retracted position. Using a paper clip, pencil, or ball-point pen, depress the reset button. With the button depressed, move each of the three dials to your desired combination. Releasing the button will set and lock your combination.



Using LumiLock:

Pull cable out from lock case.

Loop cable through zipper hasps.



To unlock, dial combination (if you need light to see combination, depress large button), hold cable, pull down switch (A), and pull out cable. Remove cable from zipper hasps. Cable will automatically retract into lock.